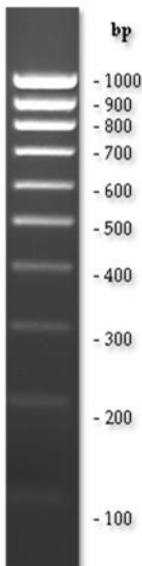
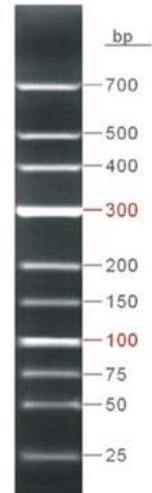


## OXGEN™ DNA Molecular Weight Markers

### OXGEN™ 25-700 bp

LADD-DN1-500

**Description:** Ready-to-use DNA Marker suitable for sizing linear double-stranded DNA fragments from 25 bp to 700 bp and composed of 10 linear chromatography-purified individual DNA fragments. All bands (except 100bp and 300bp) are supplied at approximately at 40ng/5µl. The 100bp and 300bp bands have increased intensity relative to the other bands on an ethidium bromide-stained agarose gel.



### OXGEN™ 100-1000 bp

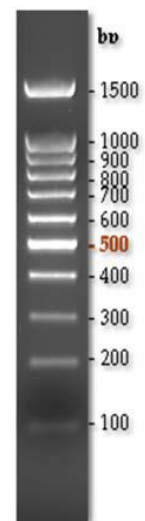
LADD-DN4-500

**Description:** The 100-1000 bp DNA ladder is suitable for sizing double stranded DNA from 100 bp to 1 kb. The DNA ladder is ready to use and can be visualized on agarose gel. It consists of 10 fragments ranging from 100 bp to 1000 bp, pairs, with 100 bp increments between bands. The 500 bp fragment intensity is doubled to serve as reference band. The resulting steps can be seen in the figure.

### OXGEN™ 100-1500 bp

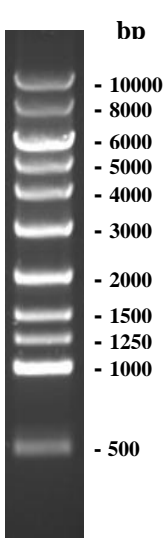
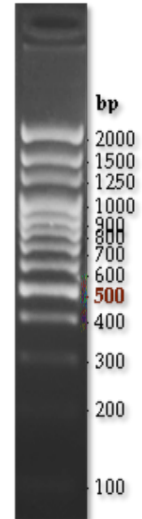
LADD-DN5-500

**Description:** The 100-1500 bp DNA ladder is suitable for sizing double stranded DNA from 100 bp to 1.5kb. The DNA ladder is ready to use and can be visualized on agarose gel. It consists of 11 fragments ranging from 100 bp to 1500 bp. The 500 bp fragment intensity is doubled to serve as reference band. The resulting steps can be seen in the figure.



**OXGEN™ 100-2000 bp***LADD-DN2-500*

**Description:** The 100-2000 bp DNA ladder is suitable for sizing double stranded DNA from 100 bp to 2kb. The DNA ladder is ready to use and can be visualized on agarose gel. It consists of 13 fragments ranging from 100 bp to 2000 bp. The 500 bp fragment intensity is doubled to serve as reference band. The resulting steps can be seen in the figure.

**OXGEN™ 500-10 kb***LADD-DN3-500*

**Description:** The 500-10 kb DNA ladder is suitable for sizing double stranded DNA from 500 bp to 10 kb. The DNA ladder is ready to use and can be visualized on agarose gel. It consists of 11 fragments ranging from 500 bp to 10000 bp. The resulting steps can be seen in the figure.

**Concentration:** 0,1 µg/µl

**Storage conditions:** Stable at room temperature. For long term storage, store at -20 °C.

**Product use limitation**

These products are developed, designed, and sold exclusively for research purposes and use only. The products are not intended for diagnostics or drug development, nor are they suitable for administration to humans or animals.